



# San Francisco Subway Vision

Land Use & Transportation Committee

October 17, 2016



# San Francisco's 2016 Subway Vision

*Ordinance 202-15 amended transportation code such that San Francisco maintain a Subway Vision*

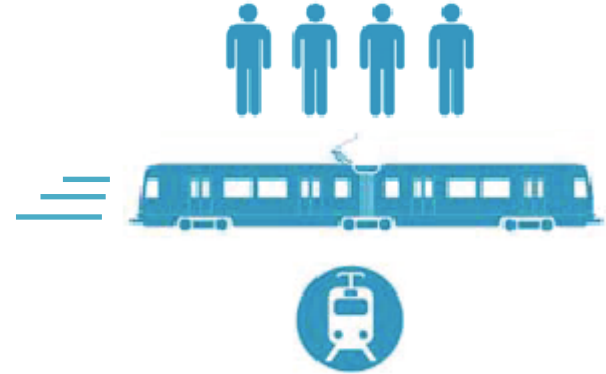
- Policy Guidance on Application of Subways
- Operator/Mode Neutral - Local and Regional Thinking
- List of Subway Candidate Corridors

Subway Vision will inform and be refined through ConnectSF Program

# Characteristics of Subways

## *Features:*

- Capacity
- Speed
- Reliability



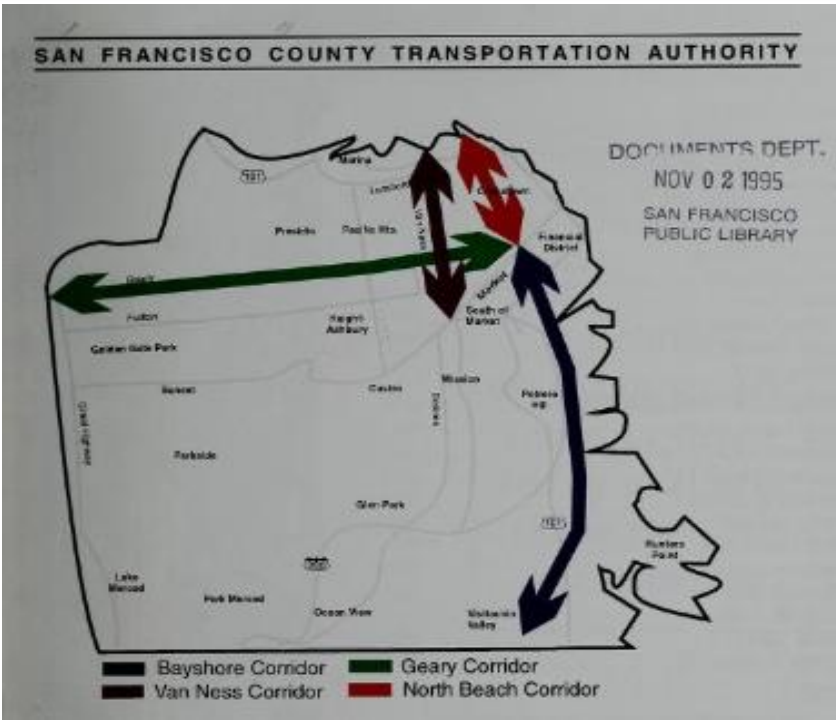
## *Tradeoffs:*

- Delivery Timeline
- Capital Cost
- Station Spacing & Access





## Prior Plan Review

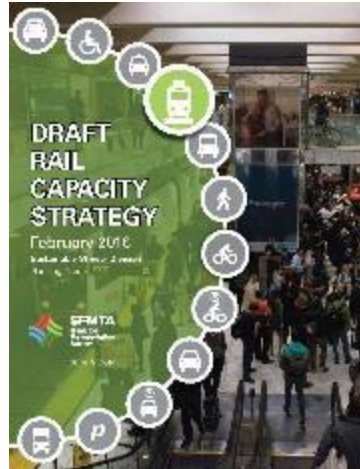


**SAN FRANCISCO COUNTY TRANSPORTATION AUTHORITY**

DOCUMENTS DEPT.  
NOV 02 1995  
SAN FRANCISCO  
PUBLIC LIBRARY

Map of San Francisco showing major transit corridors and neighborhoods:

- Corridors:**
  - Bayshore Corridor (Black arrow)
  - Geary Corridor (Green arrow)
  - Van Ness Corridor (Dark Blue arrow)
  - North Beach Corridor (Red arrow)
- Neighborhoods/Landmarks:**
  - Marina, Lombard, Potrero, Rock Hill, Presidio, Golden Gate Park, Baker, Fortitude, Lake Merced, Park Merced, Ocean View, Mission, Fisherman's Wharf, Fishers Wharf, Sausalito, Sausalito Point, Sausalito Bay.
- Legend:**
  - Bayshore Corridor
  - Geary Corridor
  - Van Ness Corridor
  - North Beach Corridor



November 2012

# BART Metro: Sustainable Communities Operational Analysis



moveSmartSF  
SAN FRANCISCO  
TRANSPORTATION PLAN  
2040

FINAL REPORT  
DECEMBER 2013



san francisco bay area

REGIONAL RAIL PLAN

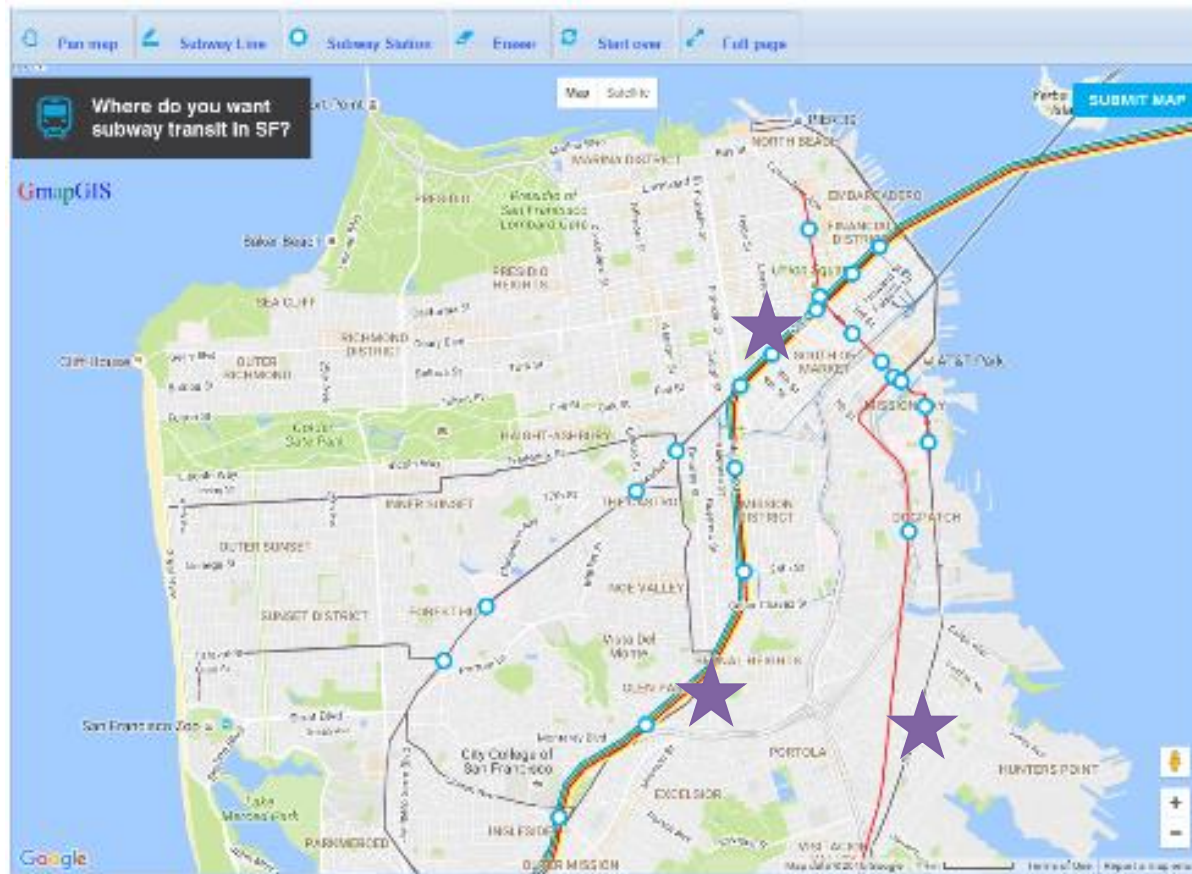
san francisco bay area

REGIONAL RAIL PLAN





# Outreach





# Online Outreach Results

## Subway Vision

Online Map Responses

October 2016

### Online Responses

Value



Existing Subway

Existing Surface Rail

Rail Stations

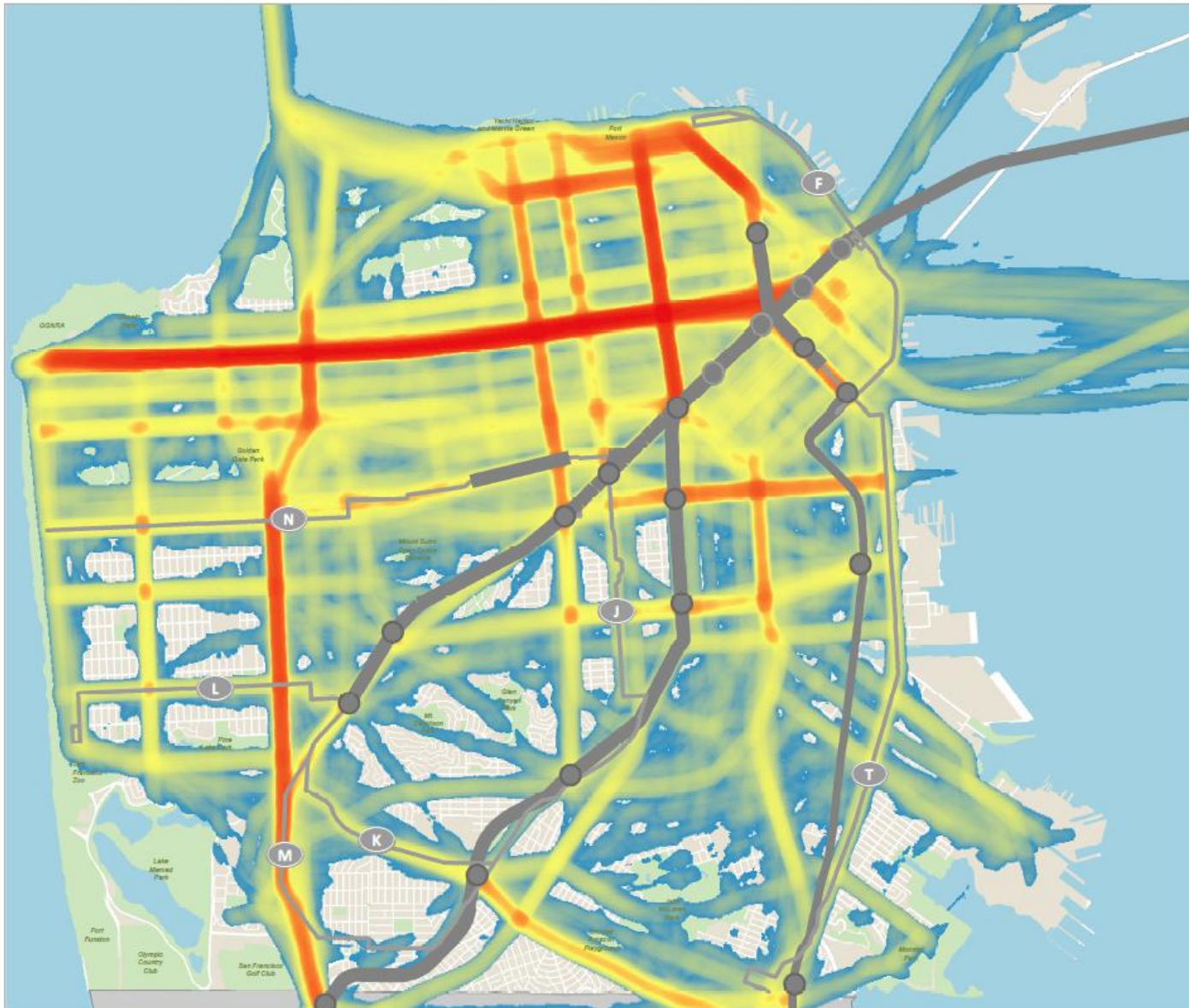


Scale 1:50,000

Date Saved: 10/12/2016

By downloading this map, you are agreeing to the following disclaimer: "The City and County of San Francisco ("City") provides the following data as a public record and no rights of any kind are granted to any person by the City's provision of this data. The City and County of San Francisco ("City") makes no representation regarding and does not guarantee or otherwise warrant the accuracy or completeness of this data. Anyone who uses this data for any purpose whatsoever does so entirely at their own risk. The City shall not be liable or otherwise responsible for any loss, harm, claim or action of any kind from any person arising from the use of this data. By accessing this data, the person accessing it acknowledges that she or he has read and does so under the condition that she or he agrees to the contents and terms of this disclaimer."

ConnectSF



# Pop-Up Outreach Results

## Subway Vision

### Pop-Up Responses

October 2016

### Pop-Up Responses

Value



- Existing Subway
- Existing Surface Rail
- Rail Stations



Scale 1:50,000

Date Saved: 10/14/2016

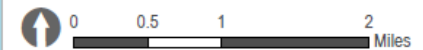
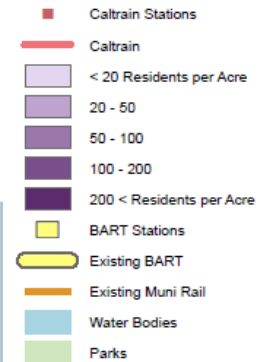
By downloading this map, you are agreeing to the following disclaimer: "The City and County of San Francisco ("City") provides the following data as a public record and no rights of any kind are granted to any person by the City's provision of this data. The City and County of San Francisco ("City") makes no representation regarding and does not guarantee or otherwise warrant the accuracy or completeness of this data. Anyone who uses this data for any purpose whatsoever does so entirely at their own risk. The City shall not be liable or otherwise responsible for any loss, harm, claim or action of any kind from any person arising from the use of this data. By accessing this data, the person accessing it acknowledges that she or he has read and does so under the condition that she or he agrees to the contents and terms of this disclaimer."

ConnectSF



# Needs Assessment & Analysis

## Projected Population Density 2040



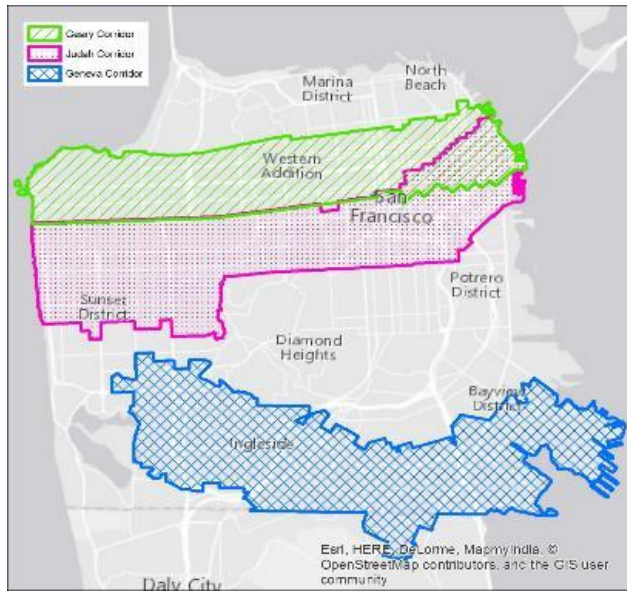
Scale 1:50,000

Date Saved: 8/11/2016

By downloading this map, you are agreeing to the following disclaimer: "The City and County of San Francisco ("City") provides the following data as a public record and no rights of any kind are granted to any person by the City's provision of this data. The City and County of San Francisco ("City") makes no representation regarding and does not guarantee or otherwise warrant the accuracy or completeness of this data. Anyone who uses this data for any purpose whatsoever does so entirely at their own risk. The City shall not be liable or otherwise responsible for any loss, harm, claim or action of any kind from any person arising from the use of this data. By accessing this data, the person accessing it acknowledges that she or he has read and does so under the condition that she or he agrees to the contents and terms of this disclaimer."



# Corridors for Evaluation



## Cross Town – Connectors - Demand Based

# Major Corridor Concepts

## Subway Vision Concept A

October 2016

Corridor Concepts

### Existing Rail

- Muni Subway
- Muni Surface Rail
- Muni Stations
- BART
- BART Stations
- Caltrain
- Caltrain Stations
- Water Bodies



Scale 1:50,000

Date Saved: 9/16/2016

By downloading this map, you are agreeing to the following disclaimer: "The City and County of San Francisco ("City") provides the following data as a public record and no rights of any kind are granted to any person by the City's provision of this data. The City and County of San Francisco ("City") makes no representation regarding and does not guarantee or otherwise warrant the accuracy or completeness of this data. Anyone who uses this data for any purpose whatsoever does so entirely at their own risk. The City shall not be liable or otherwise responsible for any loss, harm, claim or action of any kind from any person arising from the use of this data. By accessing this data, the person accessing it acknowledges that she or he has read and does so under the condition that she or he agrees to the contents and terms of this disclaimer."

# ConnectSF



# Major Corridor Concepts

## Subway Vision

Concept B

September 2016

Corridor Concepts

### Existing Rail

- Muni Subway
- Surface Rail
- Muni Stations
- BART
- BART Stations
- Caltrain
- Caltrain Stations
- Water Bodies
- Parks



Scale 1:50,000

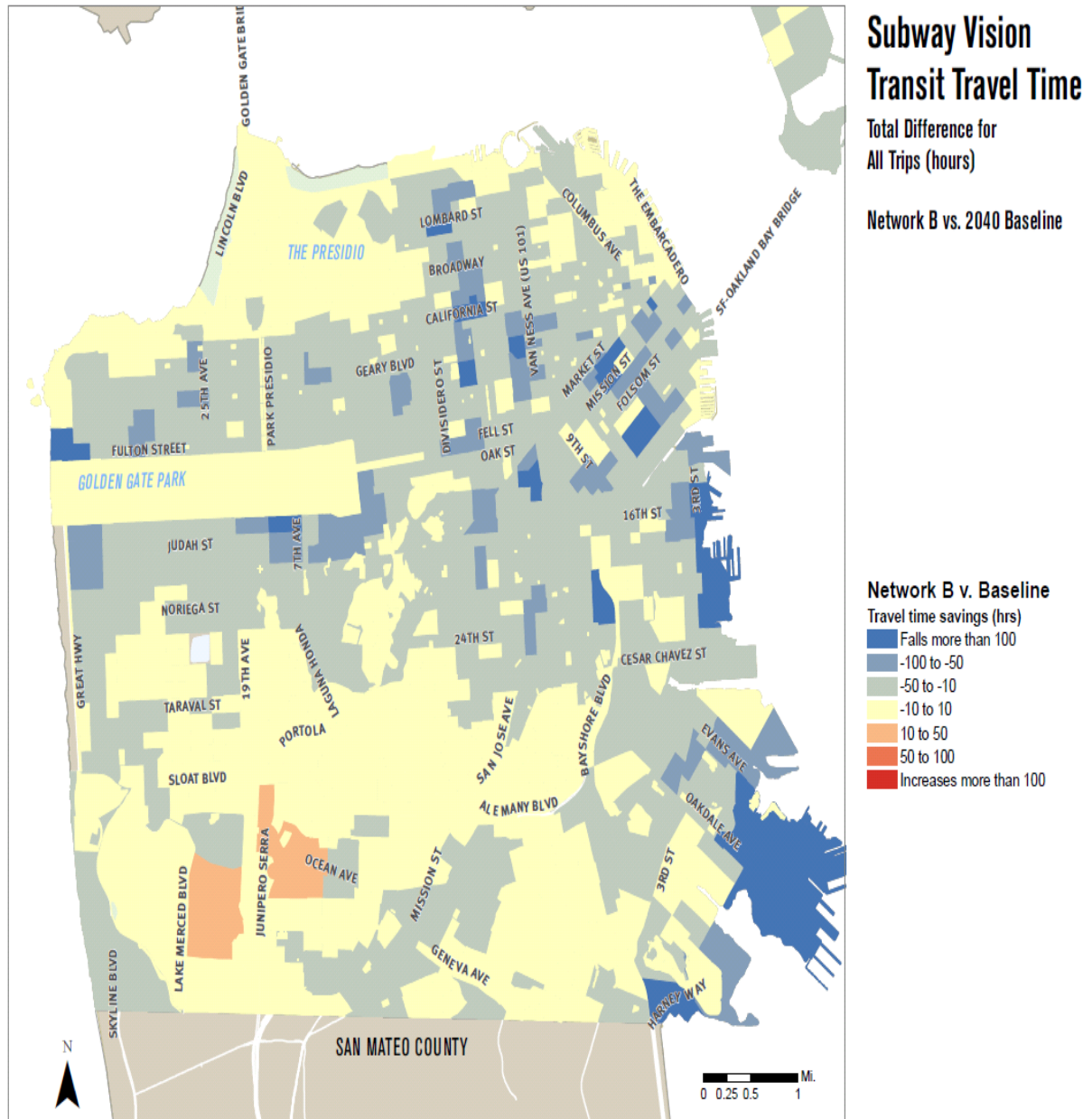
Date Saved: 9/16/2016

By downloading this map, you are agreeing to the following disclaimer: "The City and County of San Francisco ("City") provides the following data as a public record and no rights of any kind are granted to any person by the City's provision of this data. The City and County of San Francisco ("City") makes no representation regarding and does not guarantee or otherwise warrant the accuracy or completeness of this data. Anyone who uses this data for any purpose whatsoever does so entirely at their own risk. The City shall not be liable or otherwise responsible for any loss, harm, claim or action of any kind from any person arising from the use of this data. By accessing this data, the person accessing it acknowledges that she or he has read and does so under the condition that she or he agrees to the contents and terms of this disclaimer."

# ConnectSF

## System Performance Findings

- Travel Time Savings
- Reliability Improvements
- Increased Ridership
- Enhanced Accessibility
- Low Income Riders Benefit





# Evaluation Metrics



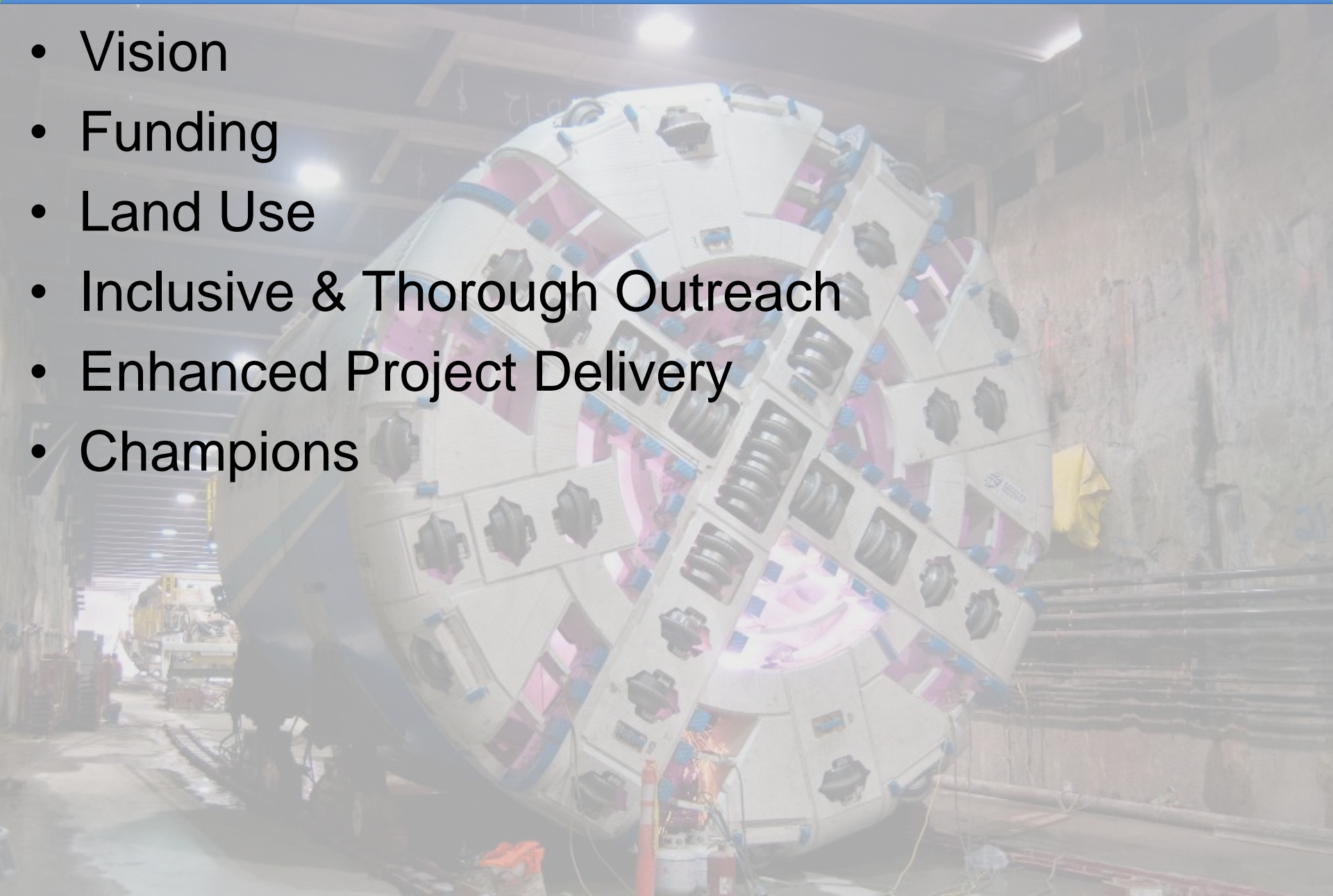
## **Transit Equity Strategy Communities**





# Developing the Subway Vision

- Vision
- Funding
- Land Use
- Inclusive & Thorough Outreach
- Enhanced Project Delivery
- Champions





# Next Steps

- Final Subway Vision End of 2016

ConnectSF

[www.connectsf.org](http://www.connectsf.org)



EQUITY



SAFETY AND LIVABILITY



ENVIRONMENTAL  
SUSTAINABILITY



ECONOMIC VITALITY



**Michael Schwartz**

Senior Planner, SFCTA

[Michael.Schwartz@sfcta.org](mailto:Michael.Schwartz@sfcta.org)

**Sarah Jones**

Director of Planning, SFMTA

[Sarah.Jones@sfmta.com](mailto:Sarah.Jones@sfmta.com)

[connectsf.org](http://connectsf.org)