

ConnectSF

July 21, 2016 JOINT HEARING
SFMTA BOARD & PLANNING COMMISSION



Why are we here today?



ConnectSF

Shaping our City's Transportation Future

San Francisco's transportation network is a defining element of our city's livability, economic vibrancy, environmental quality, and urban character.

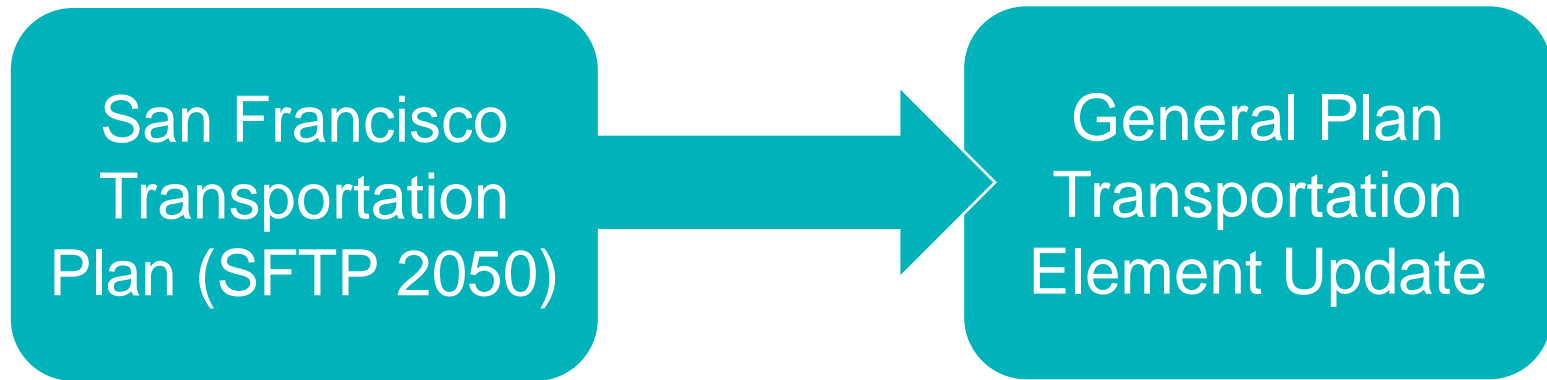
***Connect SF** is a city-wide effort to both consolidate and coordinate all transportation-related planning efforts to improve mobility for all people in San Francisco.*



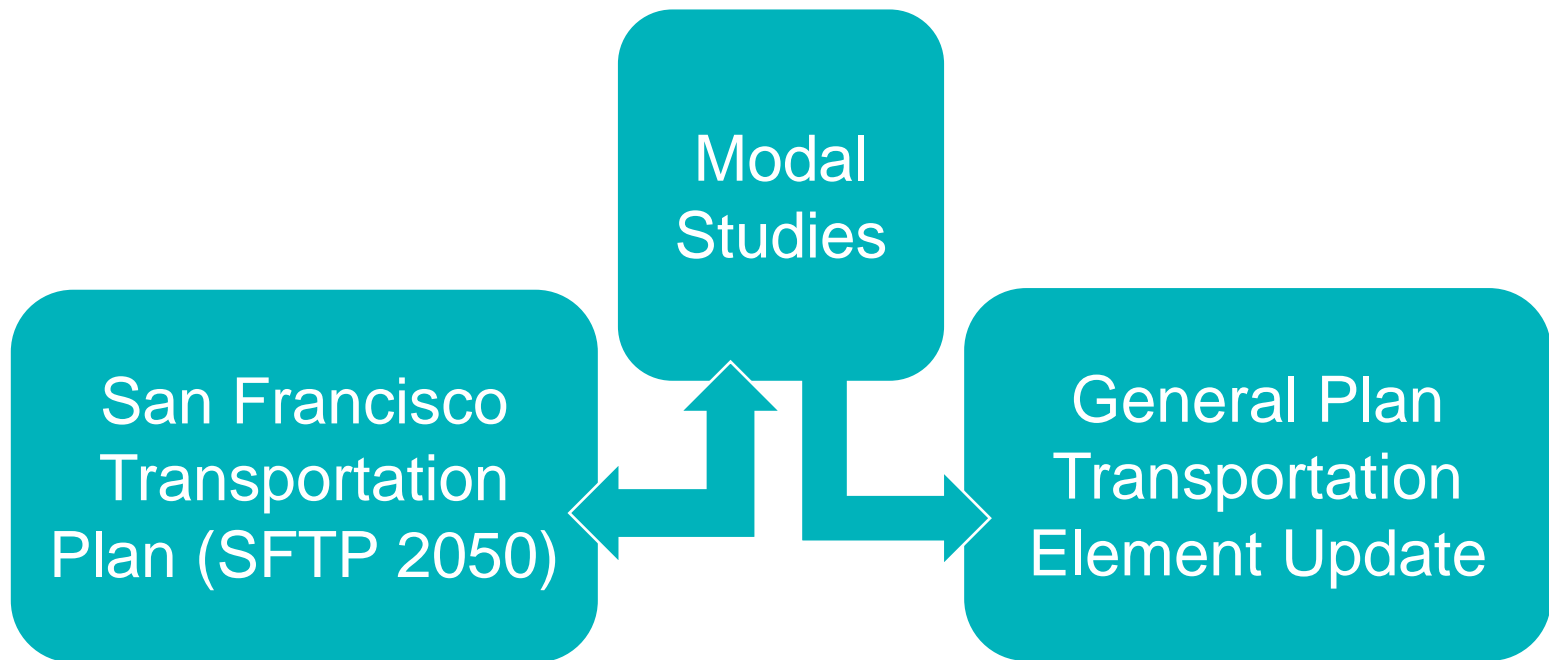
SFMTA
Municipal
Transportation
Agency



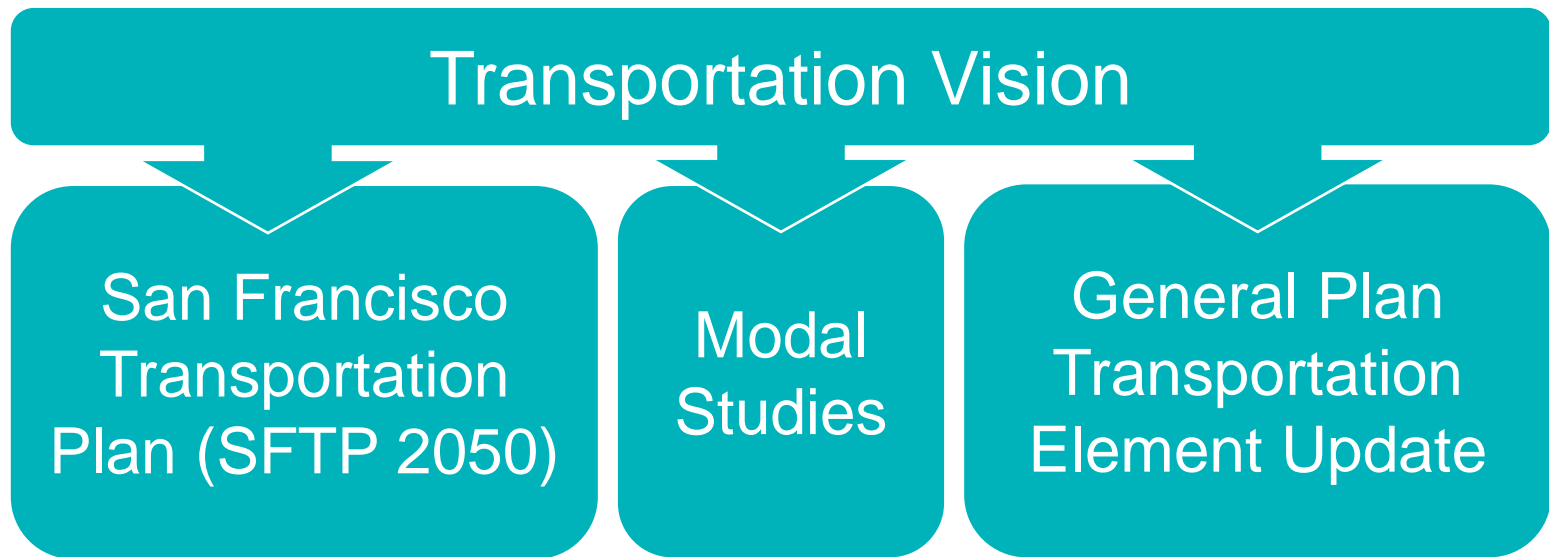
Major Components



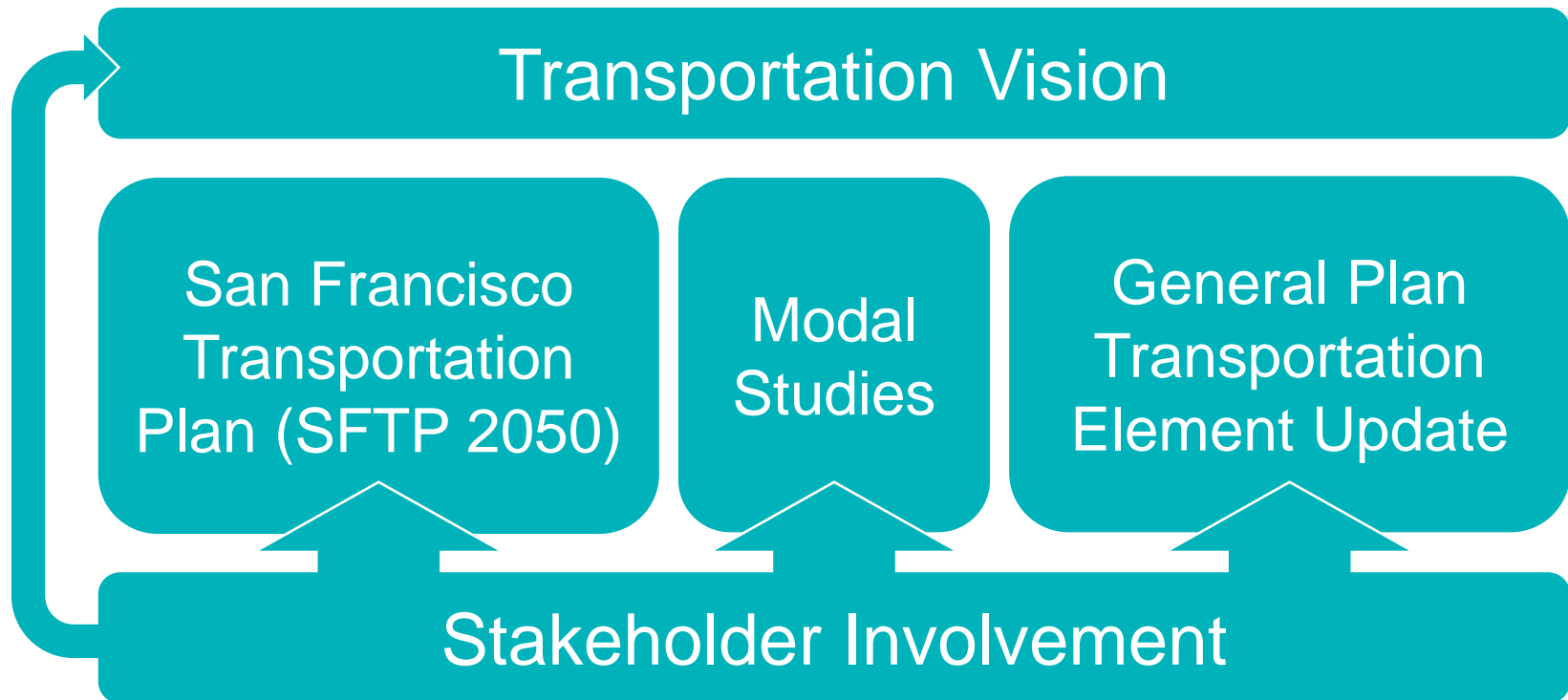
Major Components



Major Components



Major Components



Major Components

Transportation Vision

San Francisco
Transportation
Plan (SFTP 2050)

Modal
Studies

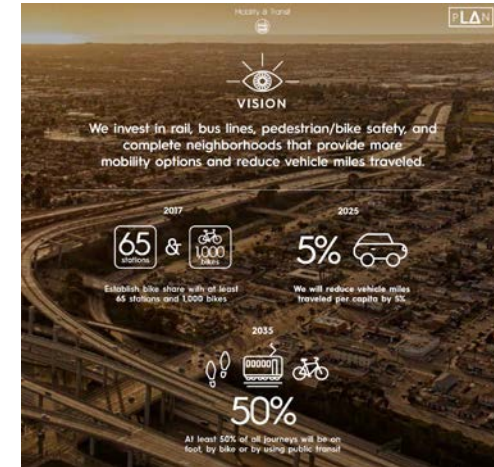
General Plan
Transportation
Element Update

Stakeholder Involvement

Major Components

Vision (2016 – 2017)

- Envision over 50 years, not funding constrained
- Identify goals, objectives, and policy framework
- Identify key uncertainties and drivers of change
- Use scenario planning to test future for land use + transportation



Major Components

Vision (2016 – 2017)

- 1 Introduce transportation dialogue
- 2 Engage the community: discuss ideas, experiences & solutions
- 3 Identify future scenarios and “preferred” future



Major Components

Vision Preliminary Vision Goals

We envision a future in which...

Equity

All users of the transportation system have equitable and affordable access to desired goods, services, activities and destinations.

Safety and Livability

People have attractive and safe travel options that support health, support livable neighborhoods, and address the needs of all users.

Environmental Sustainability

The transportation system supports a healthy environment and sustainable choices for future generations.

Economic Vitality

People and businesses easily access key destinations for jobs and commerce, including established and growing neighborhoods both within San Francisco and the region.

Major Components

Modal Studies (2017-2018)

- Subway Vision
 - (preliminary effort, 2016)
- Muni Transit + Regional Transit Opportunities
- Freeways and arterials
- Build on existing & on-going multi-modal plans



City of Seattle Department of Transportation
TRANSIT MASTER PLAN
FINAL SUMMARY REPORT

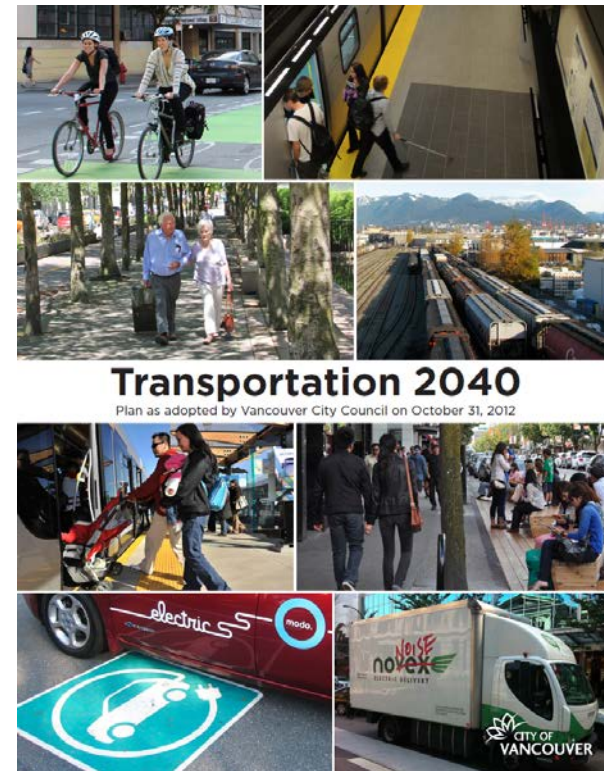
April 2012



Major Components

SFTP 2050 (mid-2018)

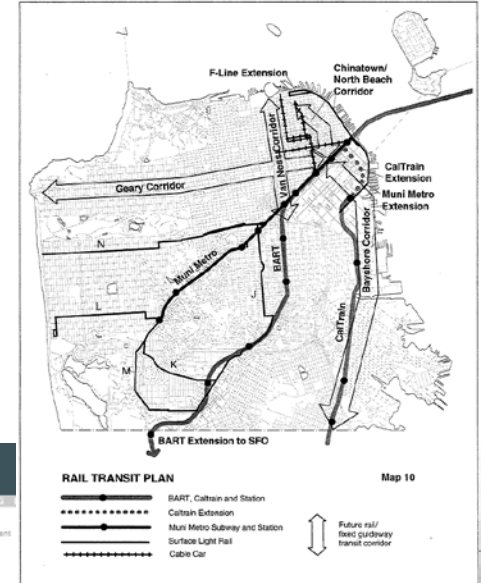
- 2050 time horizon
- Informed by modal studies and Vision
- Ensure regional transit and multimodal planning
- Investment scenarios
- Policy recommendations
- Transportation project priorities



Major Components

Transportation Element Update

- Required General Plan element per CA law
- Codification of City's transportation goals, policies and long-term investment priorities
- All City actions and investments must be consistent with General Plan



SAN FRANCISCO
GENERAL PLAN
SAN FRANCISCO PLANNING
Planning Home > General Plan > Transportation Element

Transportation Element

[View table of contents: TRANSPORTATION](#)

TRA	Transportation
TRA.INT	Introduction
TRA.FAS	Fundamental Assumptions
TRA.HIS	History of Transportation in San Francisco
TRA.GEN	General
TRA.GEN.1	MEET GENERAL TRANSPORTATION NEEDS
TRA.GEN.1.1	Involve citizens in planning and developing transportation facilities and services...
TRA.GEN.1.2	Ensure the safety and comfort of pedestrians throughout the city.
TRA.GEN.1.3	Give priority to public transit and other alternatives to the private automobile...
TRA.GEN.1.4	Increase the capacity of transit during the off-peak hours.
TRA.GEN.1.5	Coordinate regional and local transportation systems...
TRA.GEN.1.6	Ensure choices among modes of travel...
TRA.GEN.1.7	Assure expanded mobility for the disadvantaged.
TRA.GEN.1.8	Develop a flexible financing system for transportation...

An aerial photograph of San Francisco, California, showing the dense urban landscape and the Golden Gate Bridge in the distance. The image is overlaid with a semi-transparent teal color. The text is centered in the upper half of the image.

How do People & Goods Move Today in San Francisco?

Recent Trends

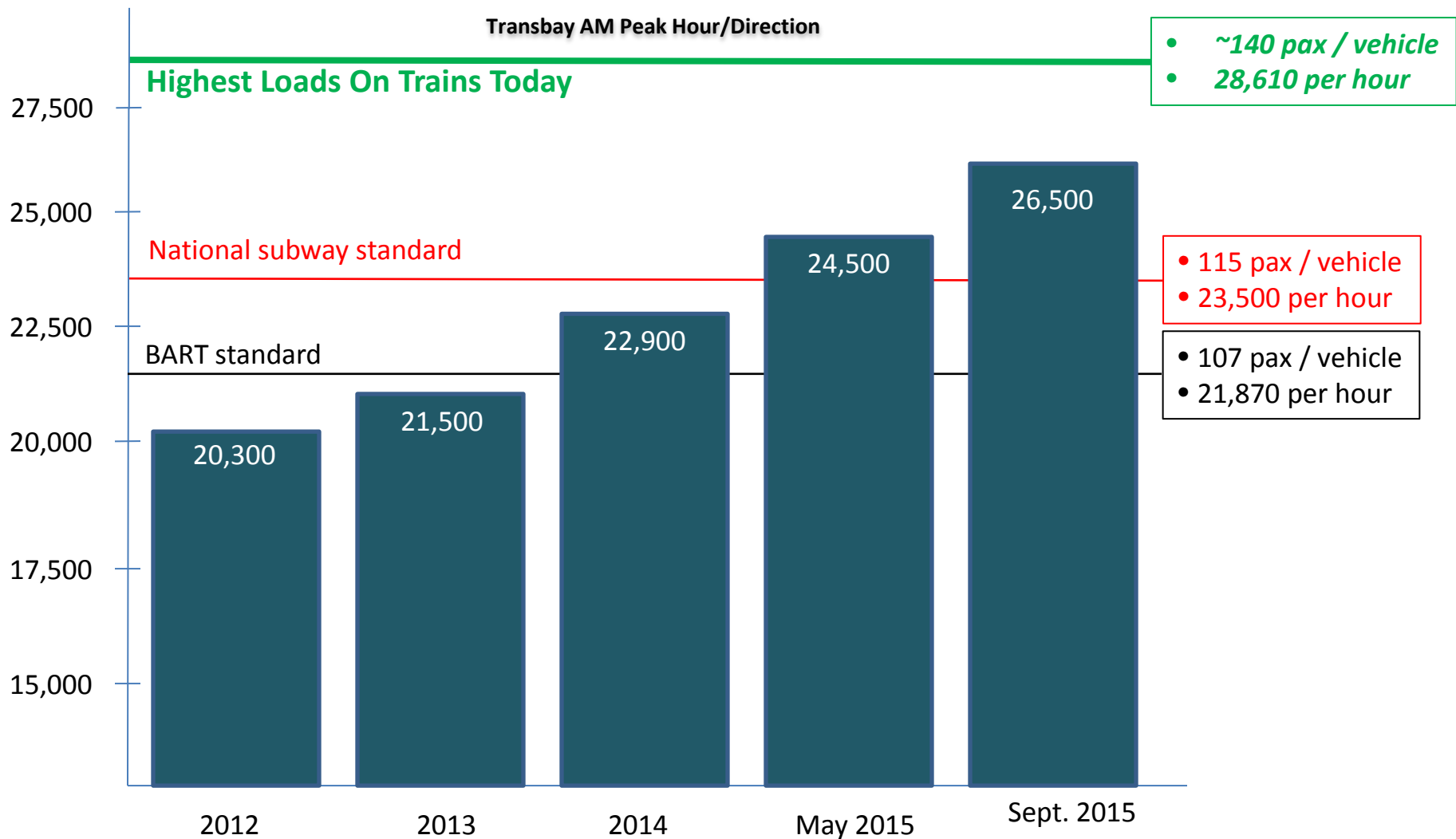
Regional Transportation

- Caltrain ridership has increased by more than 40% in the last 5 years.
- BART ridership has increased by 25% (100,000 daily riders) in the last 5 years.
- Number of morning peak-hour trips across the SF Metro corridor grew by nearly 10% in last 5 years



Core Capacity Study, 2016

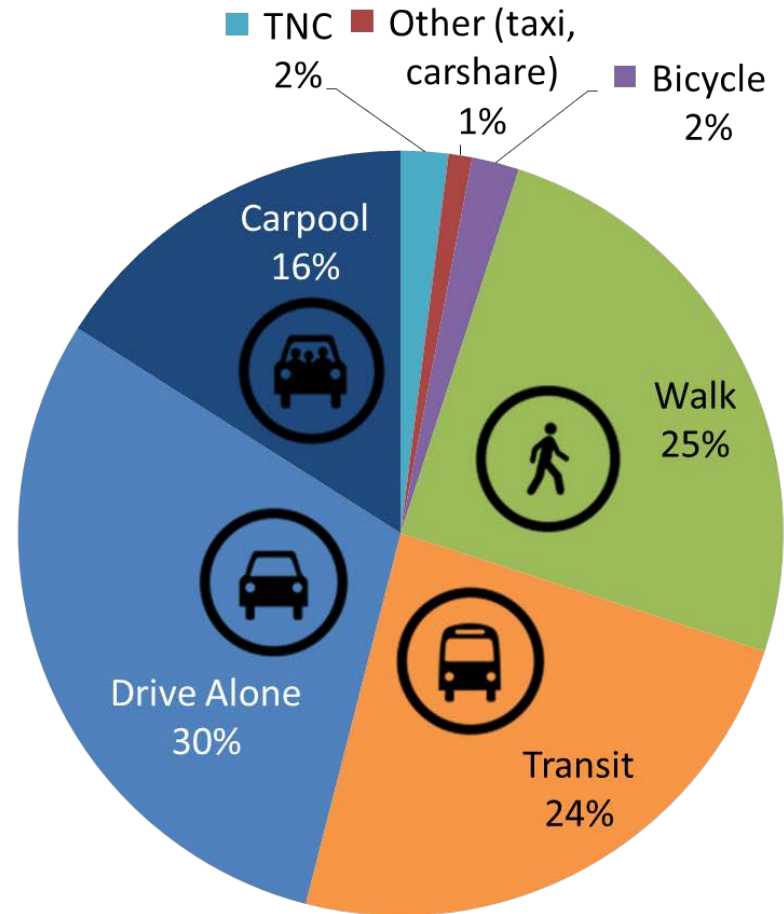
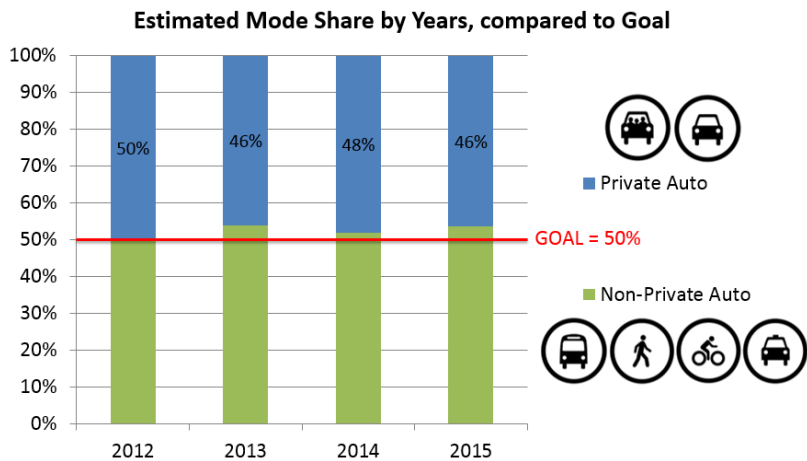
Transbay AM Peak Hour/Direction



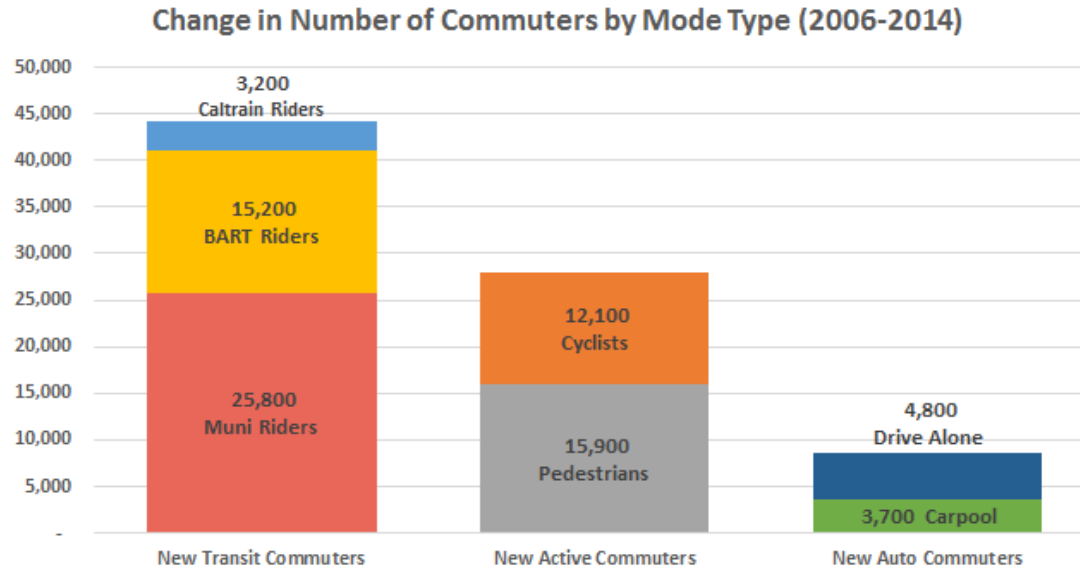
Bay Area Rapid Transit (BART)

Recent Trends

2015 Mode Share



Mode Share Statistics



Source: American Community Survey, 1-Year Estimates

Recent Trends

Goods Movement

Growth and major truck routes
in the eastern part of the city

(Highway 101)

Impact of trucking through
major arterials in the city

Impacts on neighborhoods of
concern



Land Use & Transportation

Integrating Planning & Policy

URBAN DESIGN

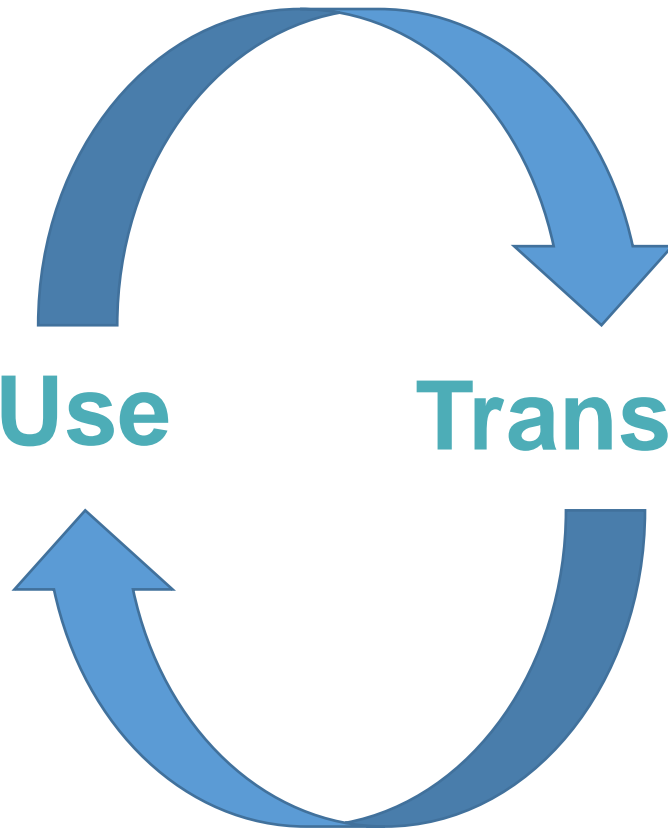
MULTI-MODAL
STREET USE

Land Use

Transportation

PARKING

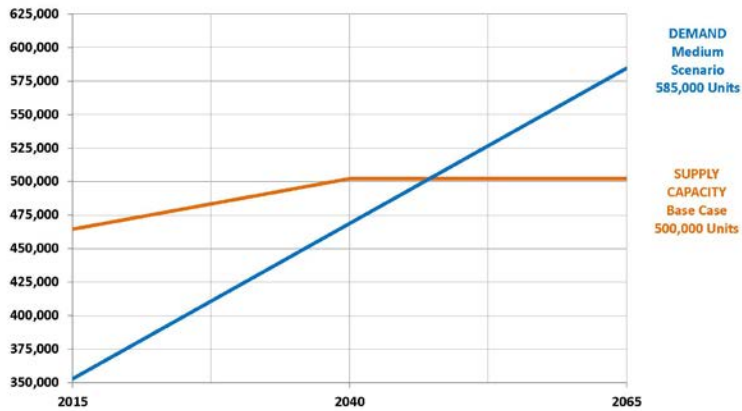
ACCESSIBILITY &
EQUITY



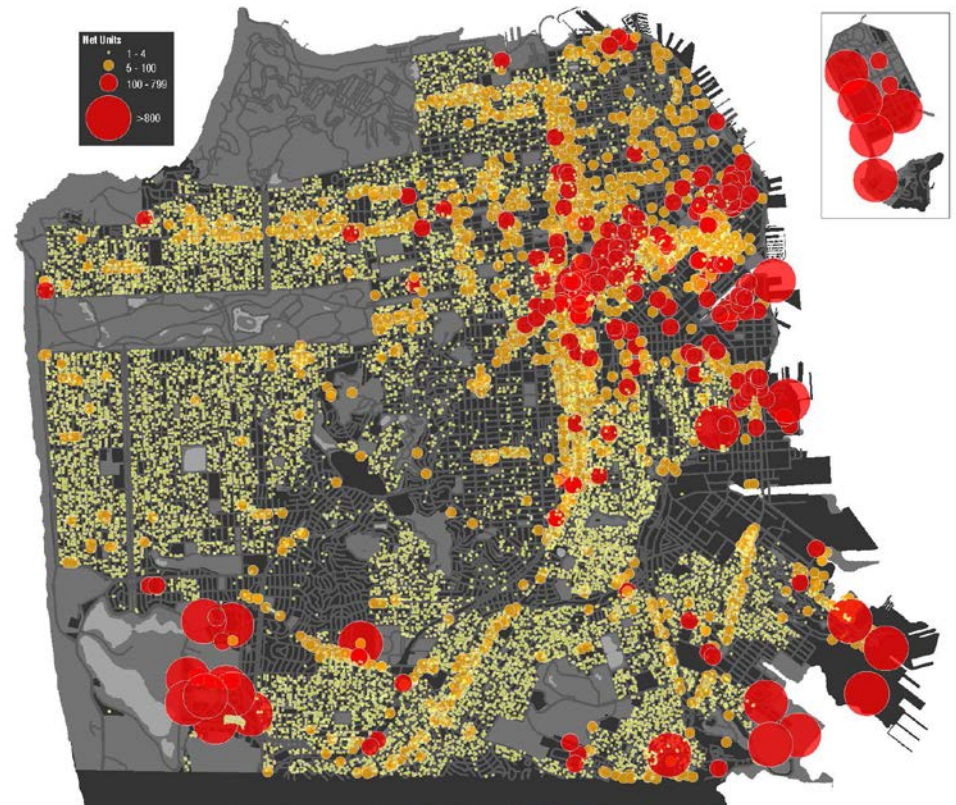
Land Use & Transportation

Integrating Planning & Policy

SF HOUSING -- Preliminary Supply & Demand Assessment



SOURCE: SF Planning, JMG, 072218
Demand: ARMS, Draft PDA Projections (May 2016), Medium Scenario, Straight Line Projection from 2040.



Looking Toward the Future

Trends: Regional, National, Global

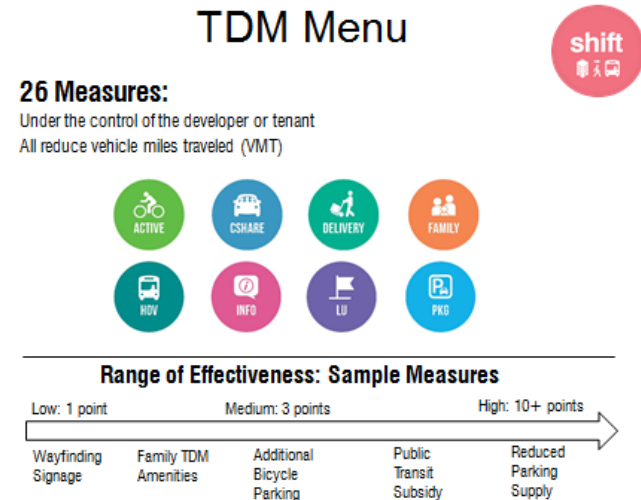
- **Social:** Ageing population; changing travel preferences
- **Technology:** Automation; big data; shared mobility
- **Economic:** Health of local and regional economy
- **Environmental:** Climate change, built environment
- **Political:** Local and regional cooperation



Need for More Progress

Understanding the Role of Land Use & Travel Choice

- How can we manage and invest in the transportation system fairly and effectively?



Making Important Choices

These are some questions. There may be many others that the public sees or cares about...

- What needs to happen with land use over the next 50 years to achieve our transportation goals?
- How do we manage and serve existing and newly developing areas of the City?
- Where will the major trip generators be and how do we improve access for residents, employees and customers?
- What transportation trends may change the nature of travel?
- What may we need to do to plan for climate change effects over time?
- What might we miss if we do not consider the long term future?
- What role will San Francisco play within the region to meet our long range transportation and land use vision?

The Role of the Public



An aerial view of a community meeting or public consultation session. A diverse group of people is gathered in a large, open space, likely a community center or library. They are interacting with various informational displays, including large posters on easels and smaller handouts. Some individuals are standing and talking, while others are seated in a circle, suggesting a collaborative and participatory environment. The text is overlaid on the image in a large, white, sans-serif font.

**Tell us about your values
and priorities for the future**

**Let us know what the city
should be like for future
generations**



Vision

Outcomes

To gain a deep and comprehensive understanding of community members' experiences moving throughout the city and their needs and priorities for the city's future transportation system.

To create an overarching 50-year vision for the future of transportation in San Francisco.



ConnectSF

Shaping our City's Transportation Future

San Francisco's transportation network is a defining element of our city's livability, economic vibrancy, environmental quality, and urban character.

***Connect SF** is a city-wide effort to both consolidate and coordinate all transportation-related planning efforts to improve mobility for all people in San Francisco.*



SFMTA
Municipal
Transportation
Agency



ConnectSF

THANK YOU

For more information:

Email us at connectsf@sfgov.org

Visit our website at connectsf.org