

An aerial photograph of San Francisco, showing the dense urban landscape and the skyline with prominent skyscrapers like the Transamerica Pyramid. The image is overlaid with a semi-transparent teal color.

# ConnectSF

San Francisco Planning Commission

September 28, 2017

[connectsf@sfgov.org](mailto:connectsf@sfgov.org)

[connectsf.org](http://connectsf.org)

# Partners and Purpose

- **50-year transportation vision** to align efforts between separate city agencies
- **Prioritization framework** to turn vision into projects
- **Greater public and political support** around choices and tradeoffs ahead for transportation and land use



# About the Project

***ConnectSF** is a multi-agency process to build an effective, equitable and sustainable transportation system for San Francisco's future*



**Equity**



**Economic  
Vitality**

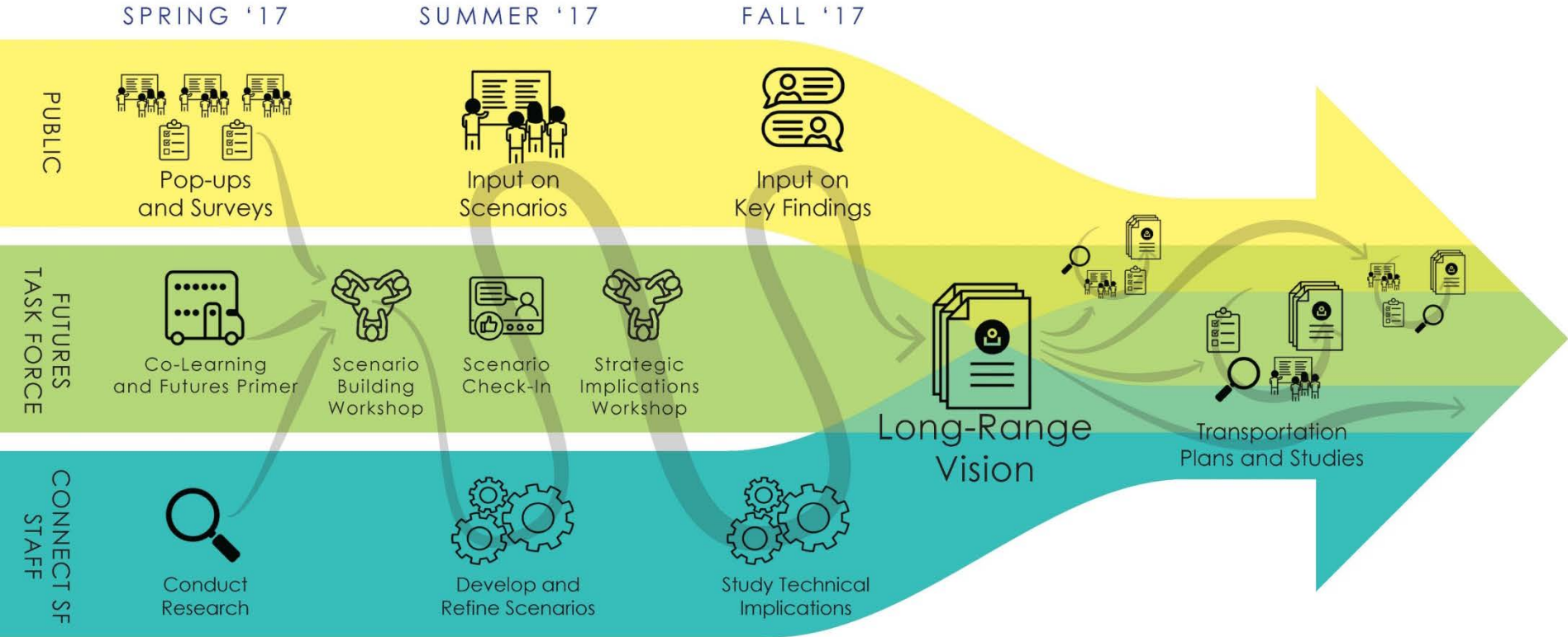


**Safety and  
Livability**



**Environmental  
Sustainability**

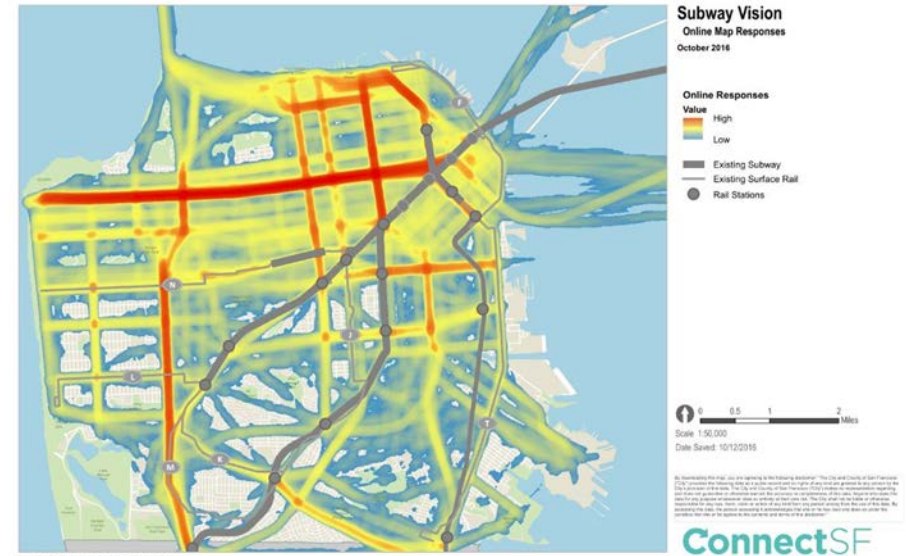
# ConnectSF Process to Date



# Process: Past ConnectSF Outreach

Summer 2016 – June 2017

- Subway Vision online survey and online game
- Conjoint survey on attitudes and values
- Open house and pop-ups across the City
- Online survey



# Process: Current ConnectSF Outreach

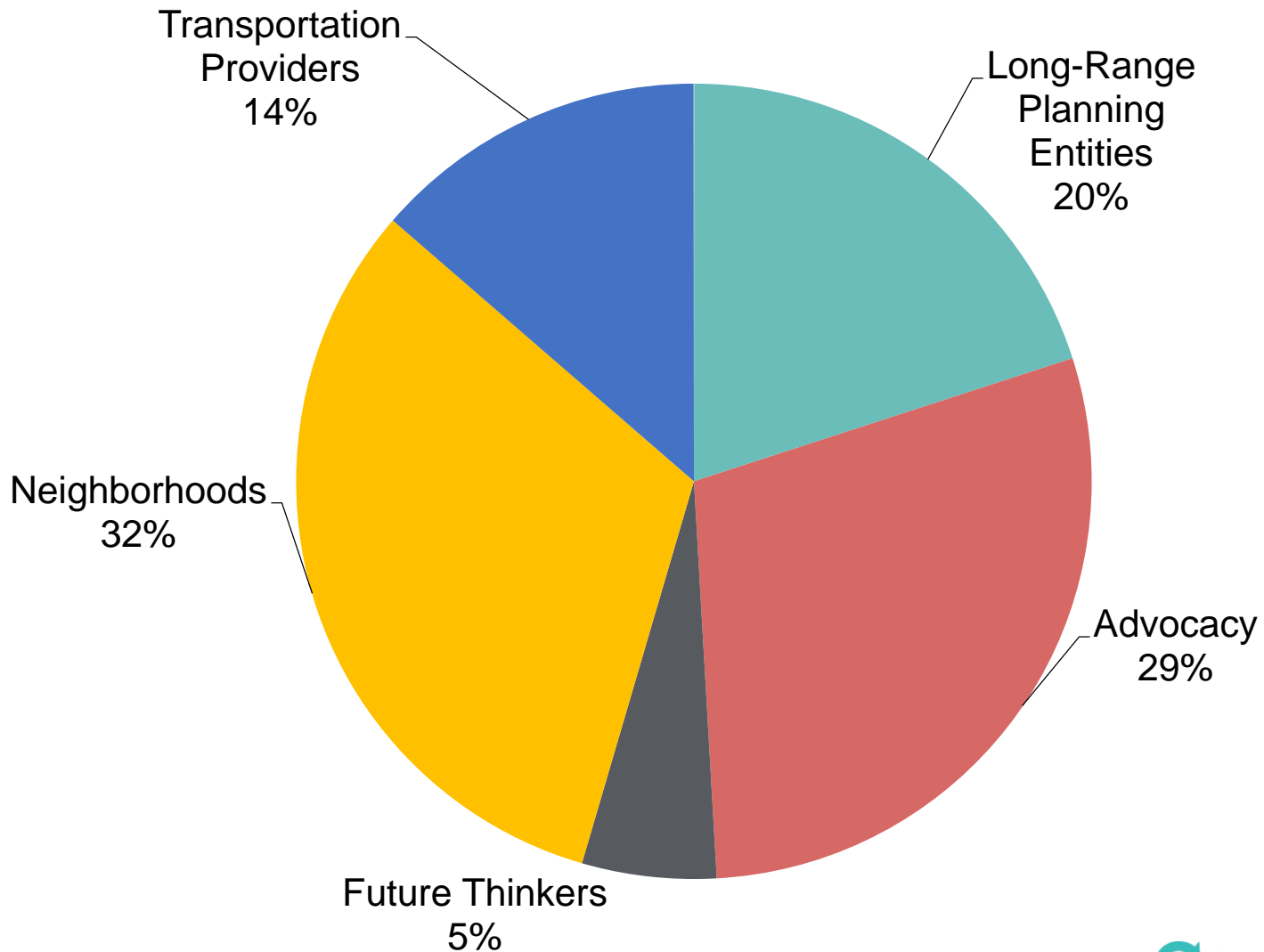
August-September 2017

- 10+ Small Group Experiences
- One-on-one briefings
- Presentations at organization meetings
- ***Online Survey***
  - Feedback on scenarios
  - Consider trade-offs
  - [connectsf.org/survey/](http://connectsf.org/survey/)

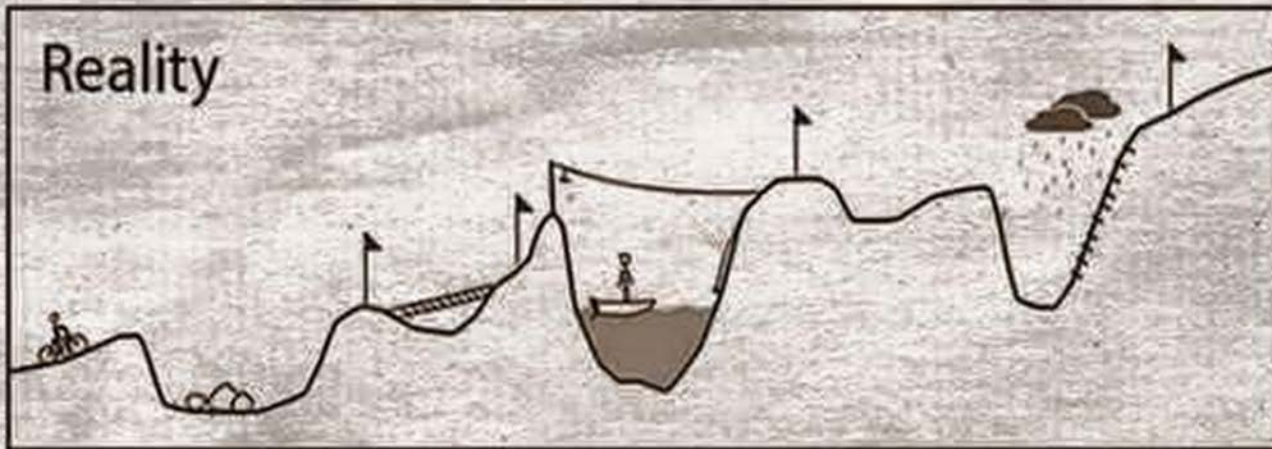


# Process: ConnectSF Task Force

**110 total**

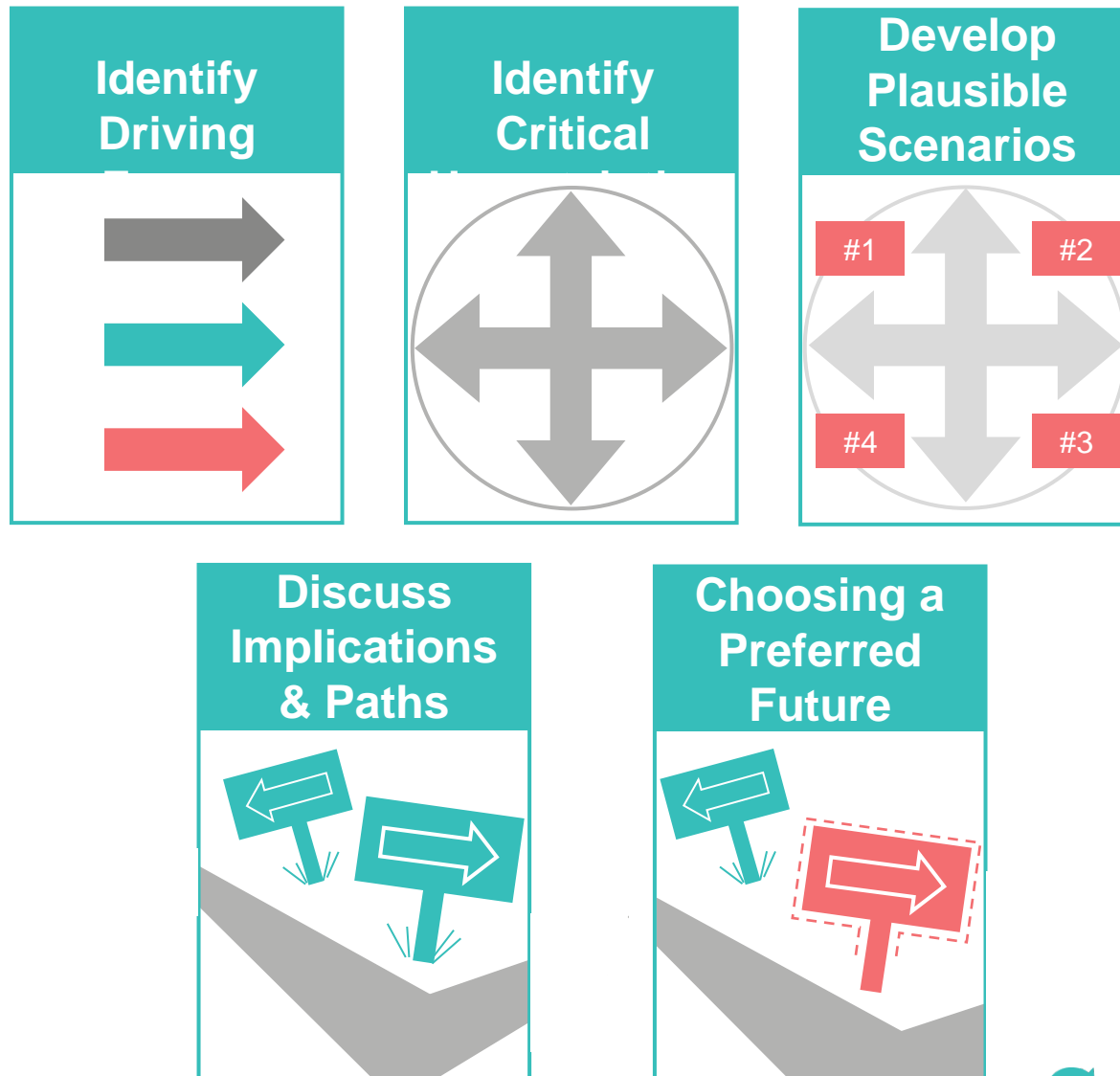


# Scenario Planning





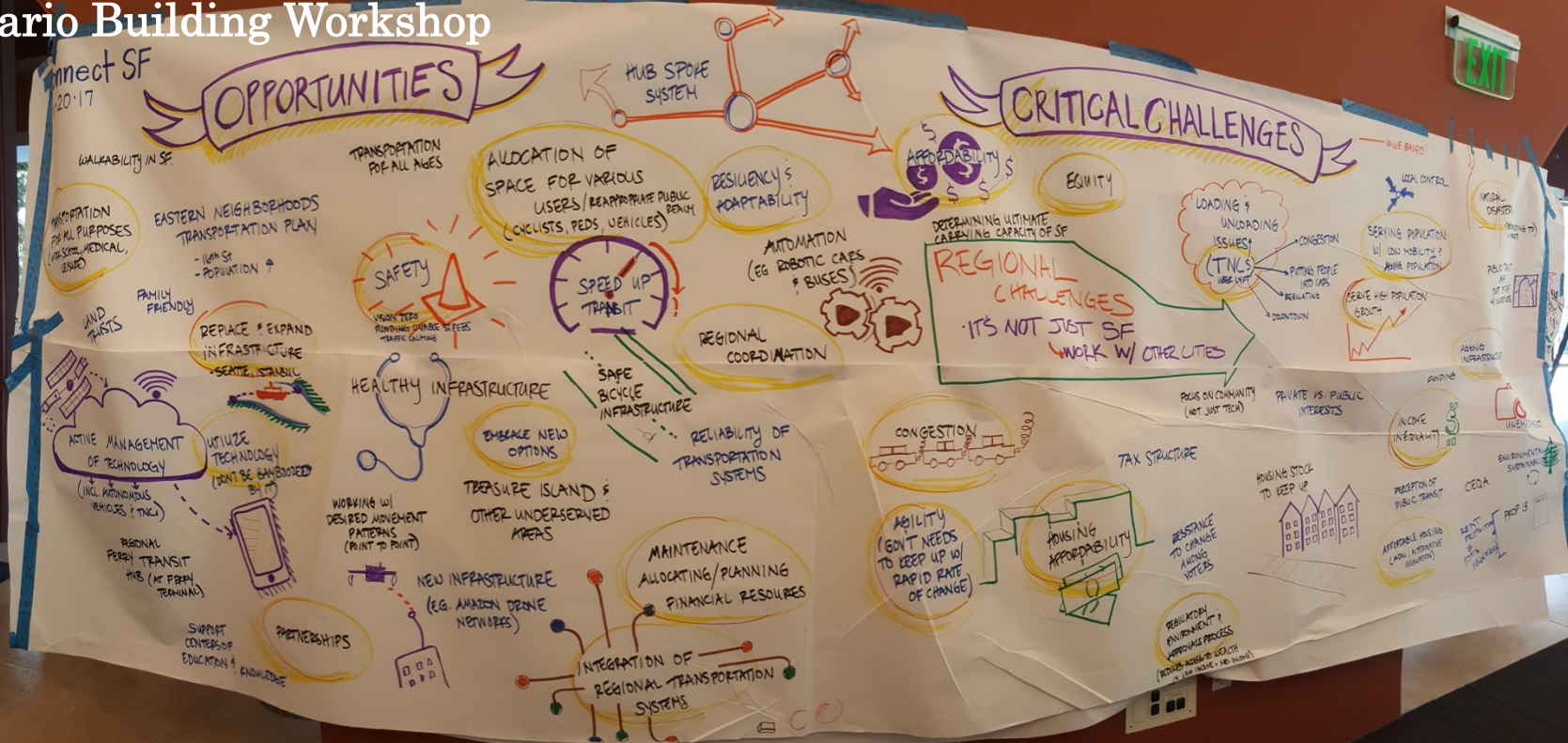
# 2065 Vision: Scenario Planning Process



# ConnectSF: Drivers of Change

ConnectSF Givens	ConnectSF Uncertainties
<ul style="list-style-type: none"><li>• Climate change, resource scarcity, and natural disasters</li><li>• Demographics and regional growth</li><li>• Earthquake risk</li><li>• Aging infrastructure</li><li>• Public distrust in government</li><li>• Rapid technological change</li></ul>	<ul style="list-style-type: none"><li>• <i>Regional Economy</i></li><li>• <i>Governance</i></li><li>• <i>21st Century Infrastructure</i></li><li>• <i>Changing Mobility Landscape</i></li><li>• <i>Public Health Influences</i></li><li>• <i>Lifestyle Choices and Values</i></li><li>• <i>San Francisco's Adaptive Capacity</i></li><li>• <i>Inequality and Polarization</i></li></ul>

# Scenario Building Workshop



## Strategic implications

**Scenario name: Nueva Venice**

**1 How will this scenario impact:**  
The city function and identity:  
Land use: **DESTABILIZED UTILITIES**, **NEW TRIPS & SCENES**, **MORE DISTRIBUTED ECONOMY**  
Region: **CONNECTED**

**2 Early warning indicators:**  
**FREQUENT FLOODING**  
**VACANT RETAIL**  
**SINKING LANDS**

CONTINUE	START DOING	STOP
<b>HOME WORK</b>	<b>UBT (Leads?)</b> - invest in infrastructure - promote vibrant	Building in risk areas - avoid high risk areas - stop like strategies
<b>TIME/\$</b>	decentralized utilities <b>MIXED INCOMES</b>	

**3 Assume this scenario will happen and your group can shape the key decisions. What would you do (or not do) to adapt to this future?**

**5 Key messages about this future (month, year, process)**

Mark an X for your scenario:

0 years?

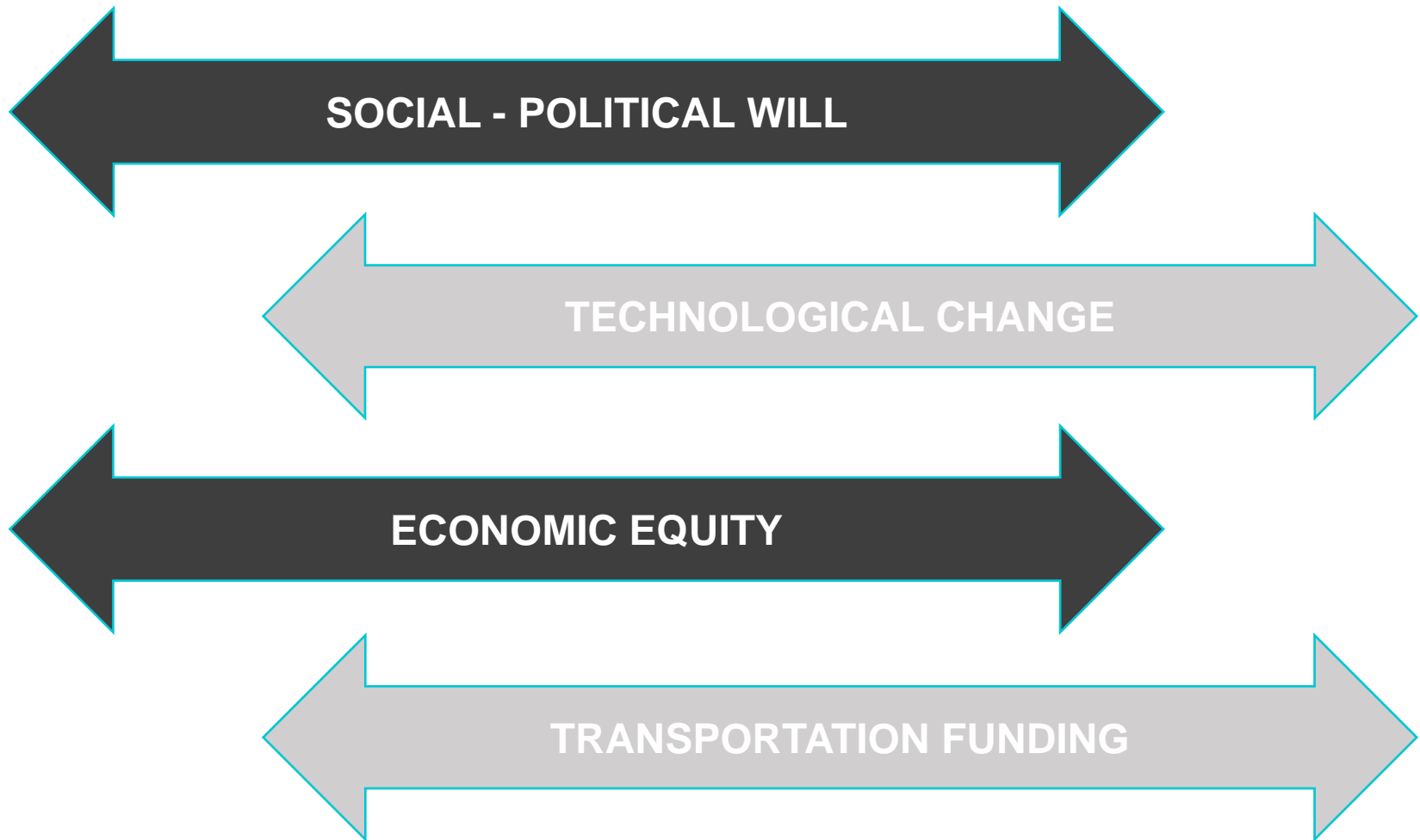
to "end state" 2068

This is a scenario in which...

- Increased public-private cooperation
- More local control over utilities
- Neighborhood improvements
- Opportunities captured by major players
- Loss of faith in the public sector to act in the best interest of the broader public
- Only those w/ economic means participate in civic discourse + contribution
- transformation benefits
- Economic benefits, incl. real estate, will come

ConnectSF

# ConnectSF: Drivers of Change



# Scenario criteria

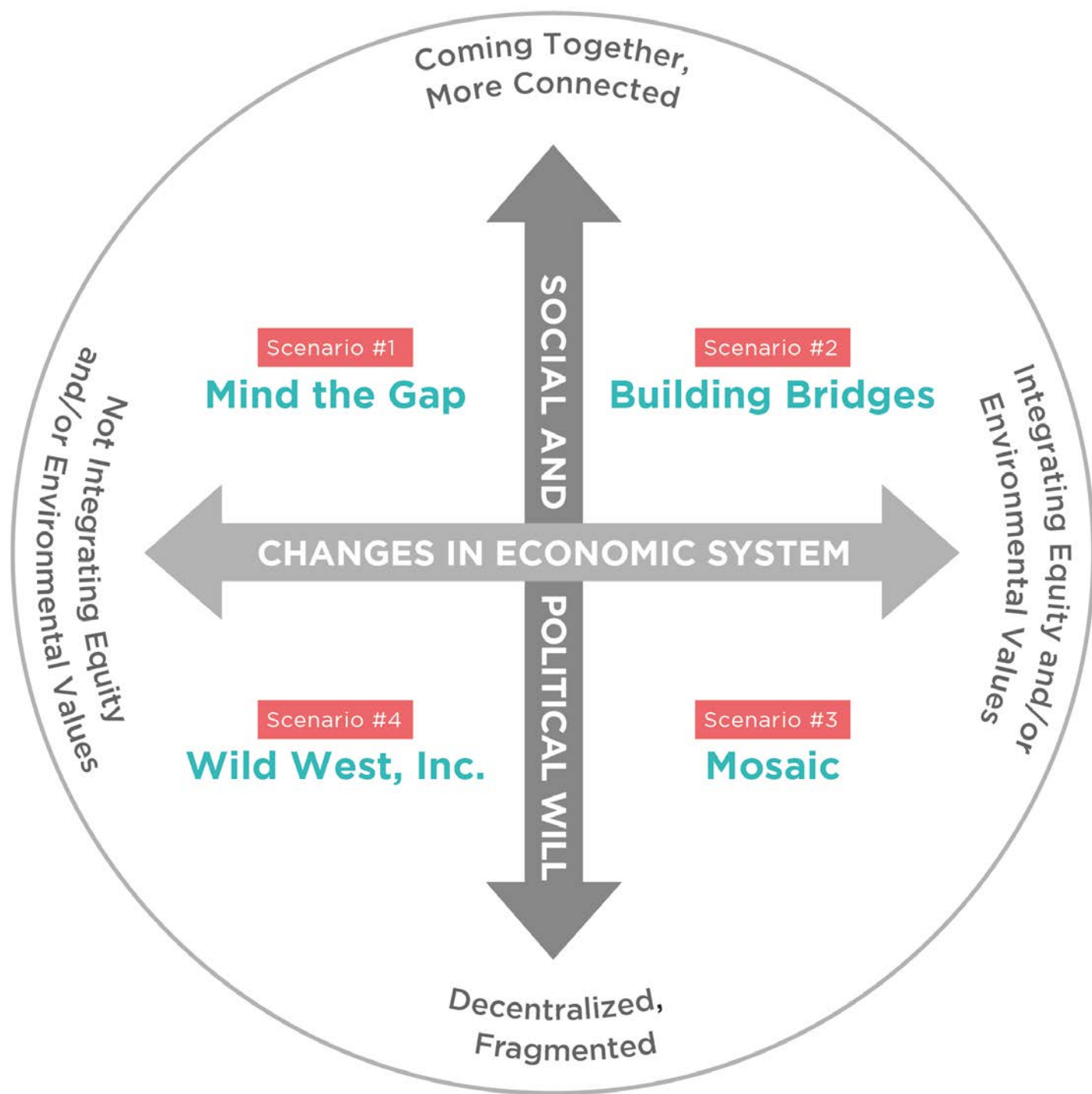
## What makes good scenarios?

1. **Plausible** but not probable - reality is stranger than fiction!
2. **Relevant** to strategic issues
3. **Divergent** from each other
4. **Challenging** to Conventional Wisdom
5. **Compelling** and memorable stories

*“The test of a good scenario is not whether it portrays the future accurately, but whether it enables an organization to learn and adapt.”*

*- Peter Schwartz, The Art of the Long View*

# Current Scenario Matrix



# Next Steps

## 2065 Vision and Application

### Completing the Vision

- Strategic Implications Workshop October 4, 2017*
- November/December Outreach*
- Final Document Winter 2017-2018 and Board & Commission Presentations*

### Upcoming Studies (2018-2020)

#### Roads

- Freeway and Streets Study to be jointly led by SFCTA and SFMTA

#### Transit

- To be led by SFMTA

#### Funding

- Countywide Transportation Plan 2050 to be updated by SFCTA

#### Policy

- General Plan Transportation Element to be updated by Planning

An aerial photograph of San Francisco, California, showing the city's dense urban landscape and the San Francisco Bay. The image is overlaid with a semi-transparent teal color. The skyline is dominated by numerous skyscrapers, with the Transamerica Pyramid being a prominent feature. The text 'connectsf@sfgov.org' is centered over the image in a white, sans-serif font.

[connectsf@sfgov.org](mailto:connectsf@sfgov.org)

[connectsf.org](http://connectsf.org)